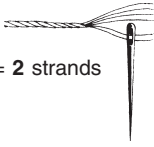


PERMIN

Scandinavian art needlework



Work with split yarn = 2 strands

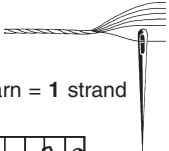


- | | | | |
|--|--------------------------|-----------------------|--------------|
| | 157. LIGHT BLUEISH LILAC | | 3045. GOLDEN |
| | 156. BLUEISH LILAC | | 310. BLACK |
| | 792. DARK BLUEISH LILAC | <p>Cross stitches</p> | |
| | 703. LIGHT GREEN | | |
| | 701. GREEN | | |
| | 3818. DARK GREEN | | |
| | 738. LIGHT BEIGE | | |

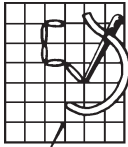
For this design please use
Permin aida fabric. Item no.
357 in colour 22 (357/22)

1 = 1 in the fabric
Count the design from centre of fabric

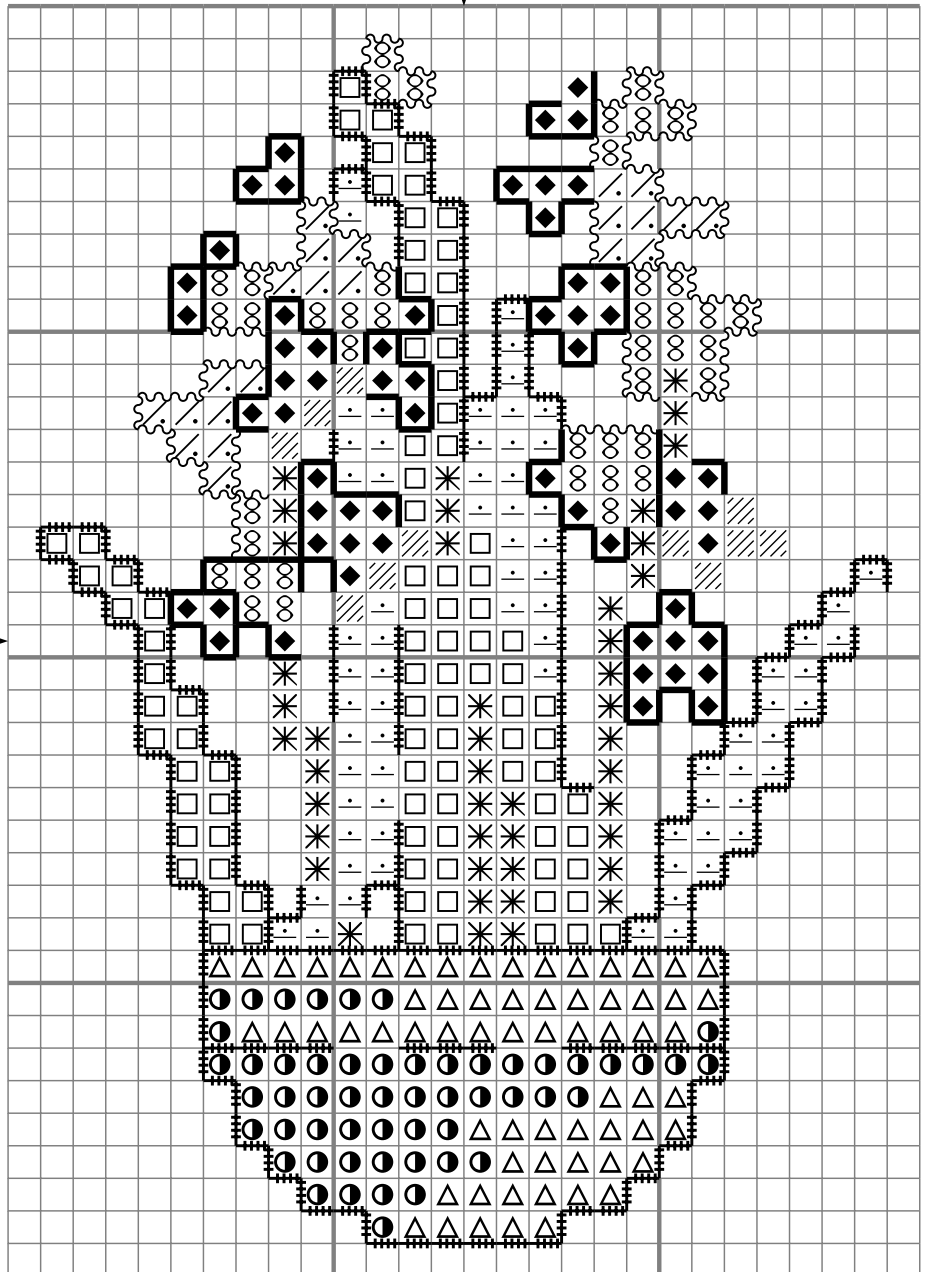
Work with split yarn = 1 strand



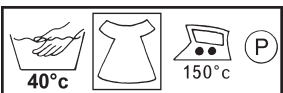
Back stiches



- | | |
|--|-------|
| | 792. |
| | 3818. |
| | 310. |



DMC
117



Made in Denmark©